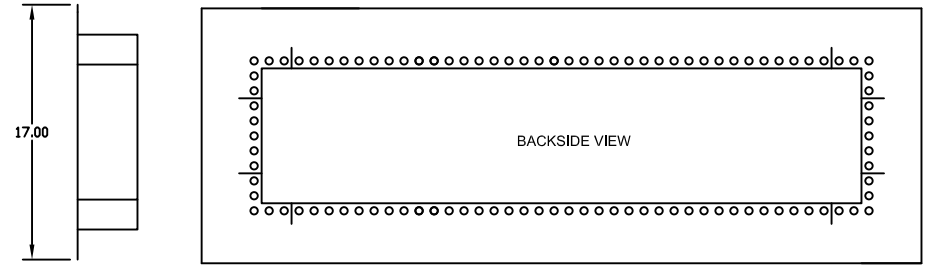
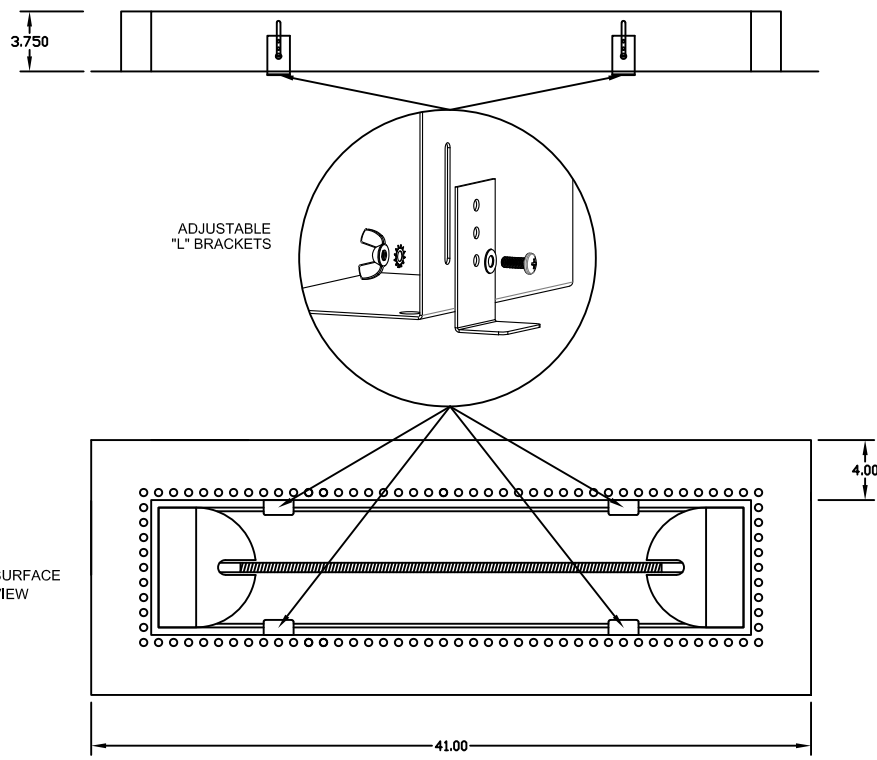
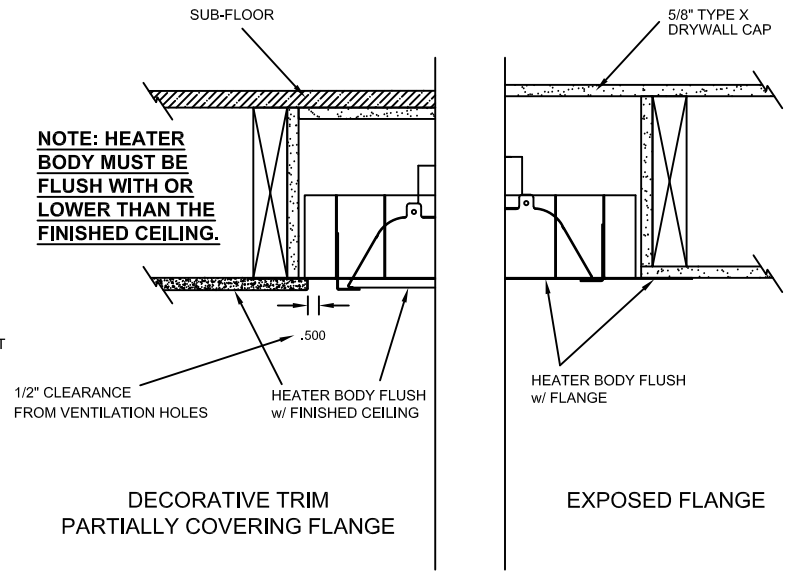
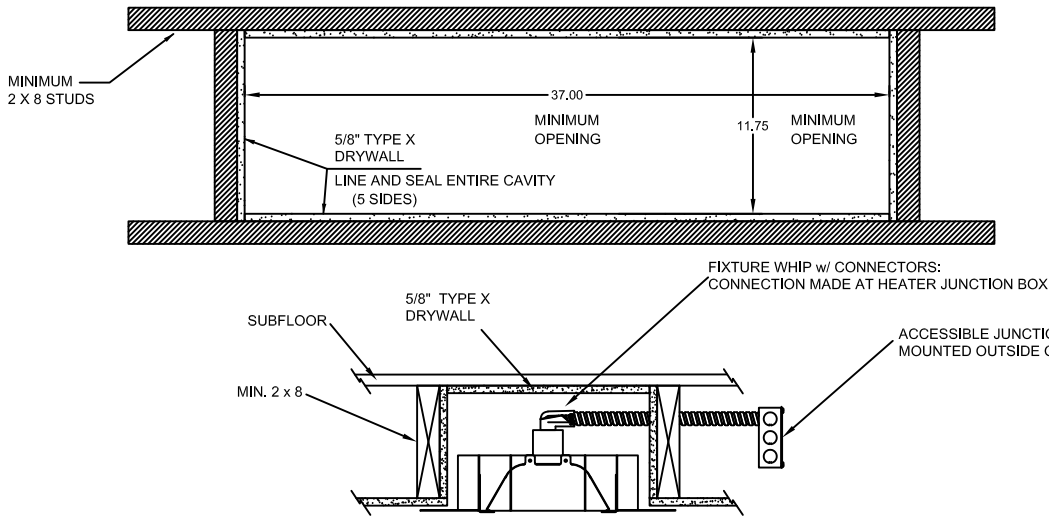


INSTALLATION TYPES



- WARNINGS:**
- Do not use Surface Mount Brackets.
 - This Frame is ONLY to be used on a flat non-sloped ceiling.
 - Heater Body must face straight down and be flush with the finished ceiling.
 - Frame and Heater cannot be installed on a pitched angle.
 - Accessible Junction Box must be installed outside of sealed drywall pocket.
 - Must use 5/8" type "X" drywall.
 - Must use supplied 4 foot Hi-Temp Fixture Whip and Hi-Temp Ceramic Wire Nuts.
 - Please contact factory for longer length Hi-Temp Fixture Whips available for purchase.
 - Discard Surface Mounting Brackets provided with Heater and use "L" Brackets.
 - Use Licensed Electrician ONLY.

- NOTES:**
- Heater suspends (Gravity) by resting on adjustable "L" Brackets in flush mount fixture.
 - Mounting holes on Surface Flange to be determined and drilled by Contractor/Installer.
 - Coil excess flex into heater cavity.

INFRA TECH™ www.infratech-usa.com		15700 S. Figueroa St. Gardena, California 90248 Phone: (310) 354-1250 Fax: (310) 523-3674
ITEM #:	18-2295	MATERIAL: 304 S.S. #4 FINISH
DESCRIPTION: W-33 FLUSH MOUNT FRAME (FOR USE WITH 33" HEATERS)		
NOTES: SUPPLIED w/ HI-TEMP FIXTURE WHIP		
DATE:	SCALE:	DRAWN BY:
Dec. 16, 2019	N/A	CL